



TIBCO Spotfire for Discovery Research

How Visual Analysis Can Accelerate Insights

David Mosenkis, Solutions Consultant

September, 2010

<http://spotfire.tibco.com/spotfire-for-you/by-industry/life-sciences/lead-discovery.aspx>



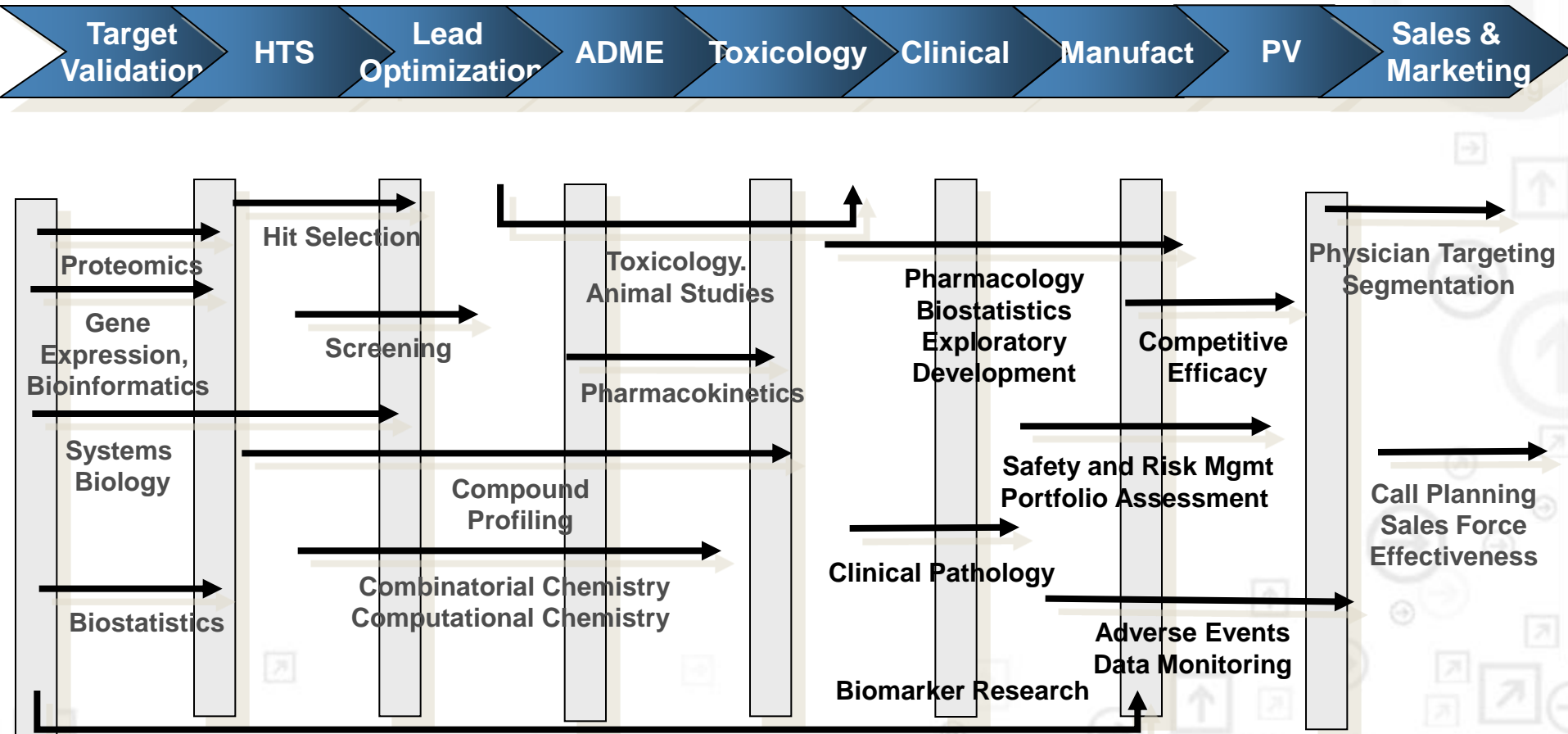
How many 3's?

1281736875613897654698450698560498286762
9809858453822450985645894509845098096585
9091030209905959595772564675050673904567
8845789809821677654872664908560912949686

12817**3**687561**3**897654698450698560498286762
980985845**3**822450985645894509845098096585
90910**3**020990595959577256467505067**3**904567
8845789809821677654872664908560912949686

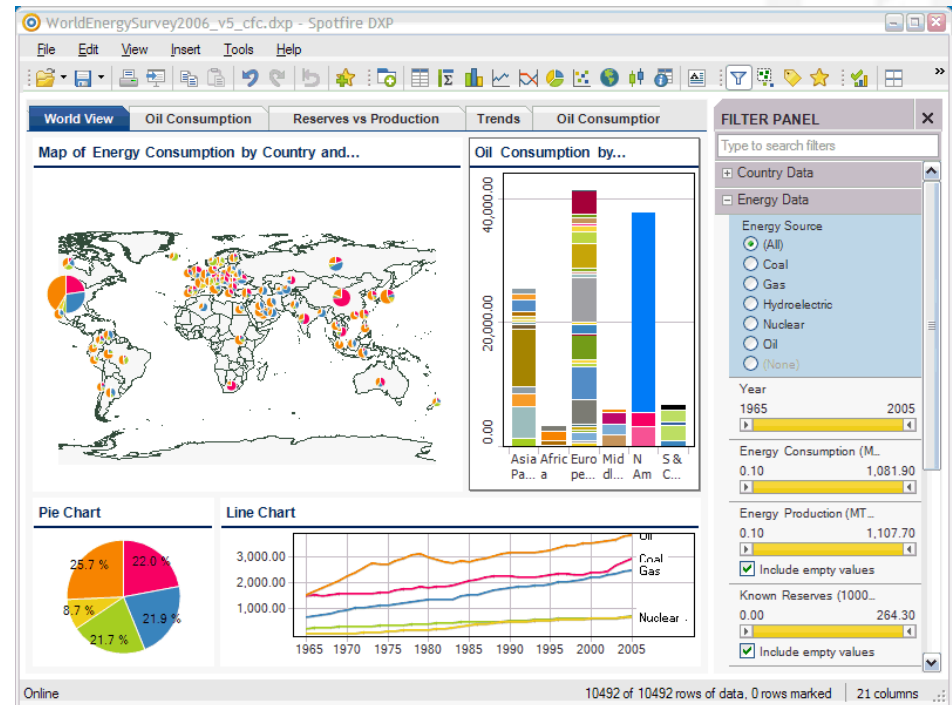
Spotfire Across the Pharma Enterprise

One user experience for analytics - Unified data retrieval - Configurable to any business process

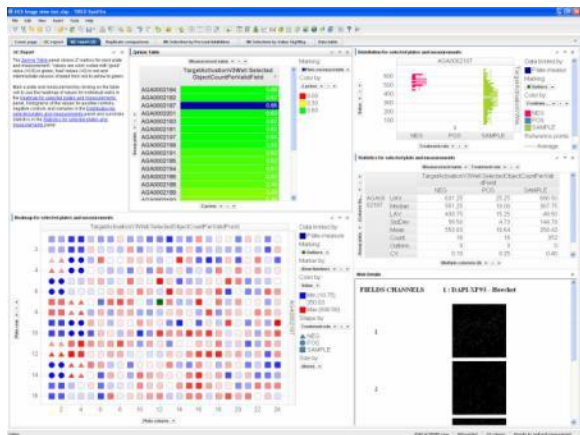


What is Spotfire?

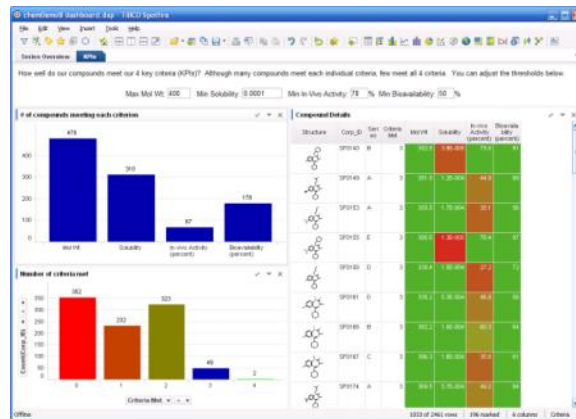
- Unique interactive visual analytics to spot trends, outliers and other hidden relationships in data
- Applicable to many different types of data
- Easily accesses data from multiple, disparate sources (Oracle, Excel, SAP, etc.)
- Helps deploy best practices
- Extensible platform with an open SDK



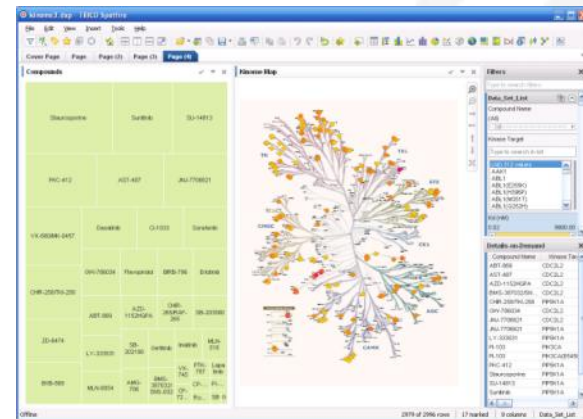
TIBCO Spotfire: One Platform, Many Applications



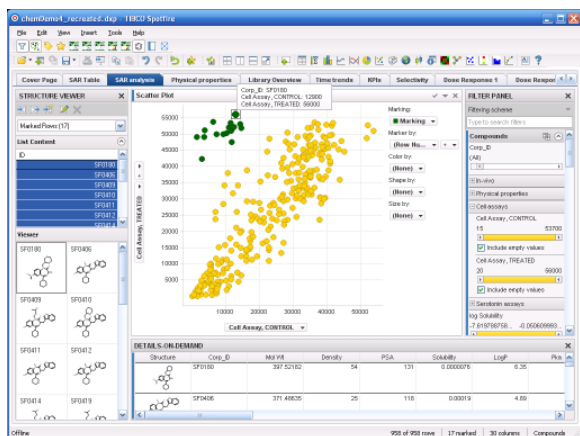
HCS, HTS



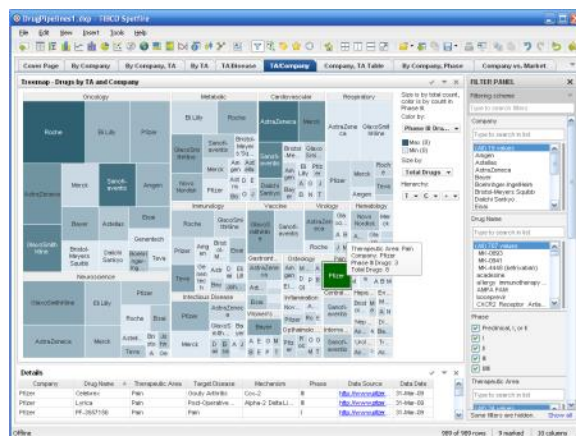
Project KPIs



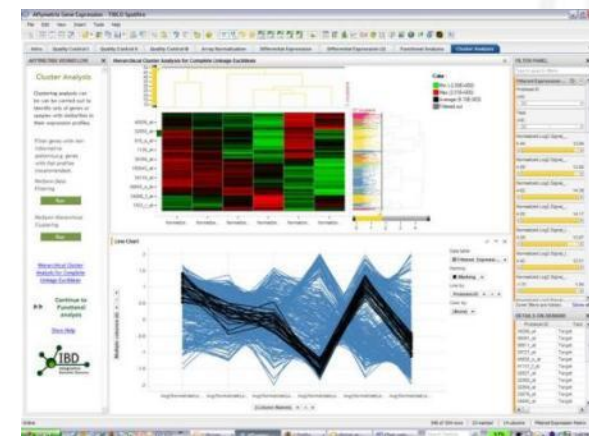
Kinase Inhibitors



SAR

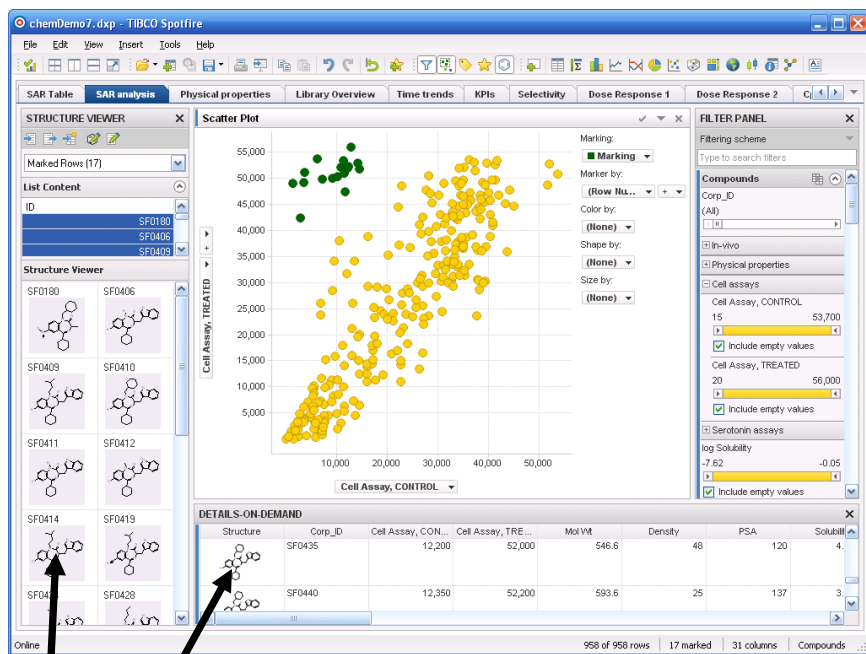


Competitive Intelligence



Gene Expression

Spotfire Integration with ChemAxon



Spotfire Client



MarvinView



Spotfire Server

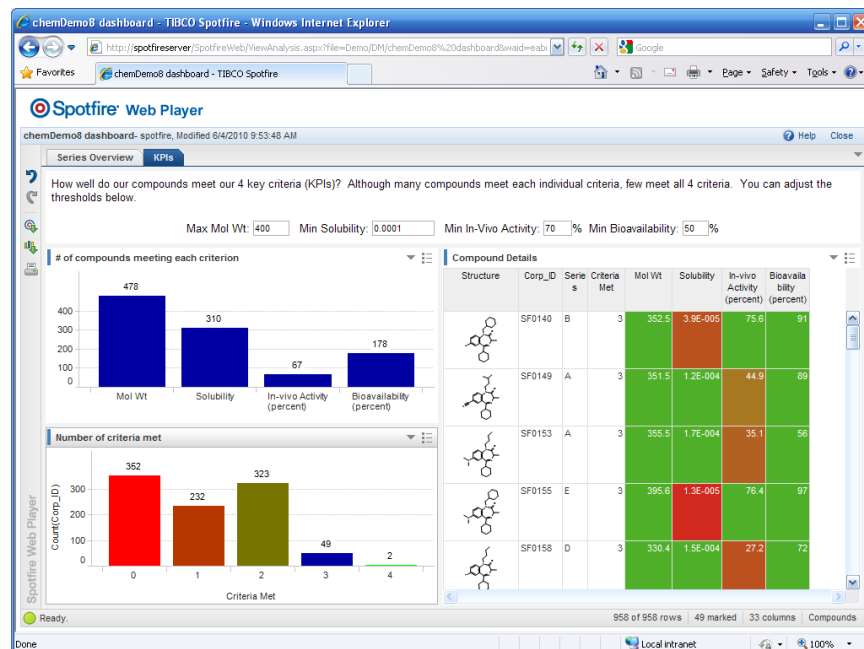


JChem Cartridge

Chemistry Project Dashboard

For: Team Leaders, Project Managers, Scientific Management

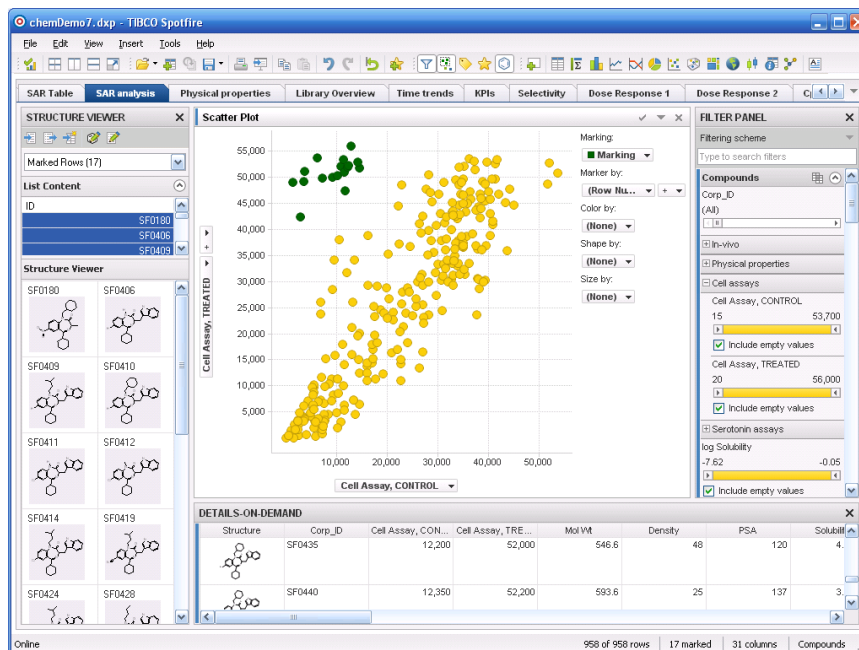
- How is my project doing vs. goals?
- Which series looks most promising?



SAR

For: Medicinal Chemists, Computational Chemists, Biologists

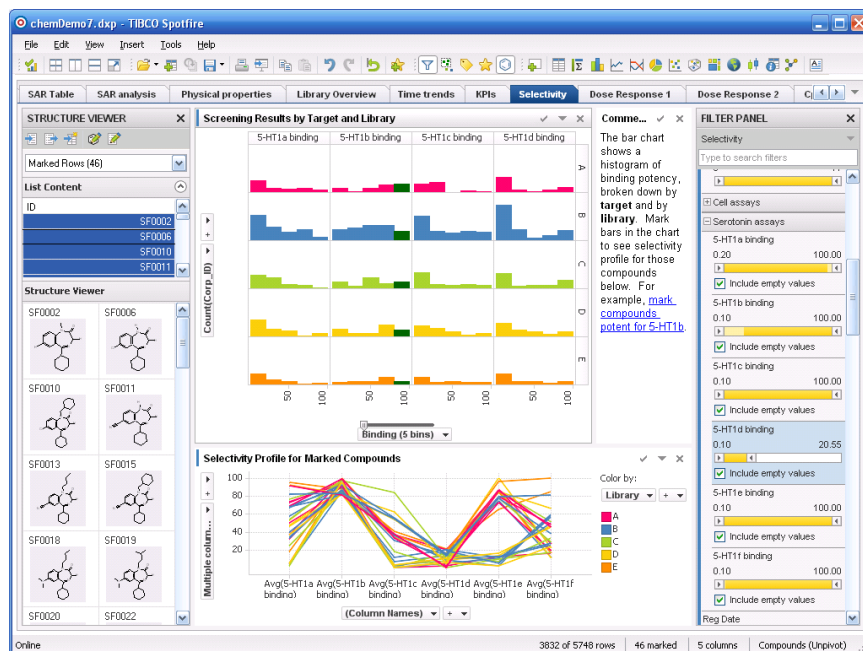
- Are there trends? Outliers?
- What's the structural basis for observed activity?
- What should I make next?



Selectivity Analysis

For: Screening Biologists, Lead Chemists

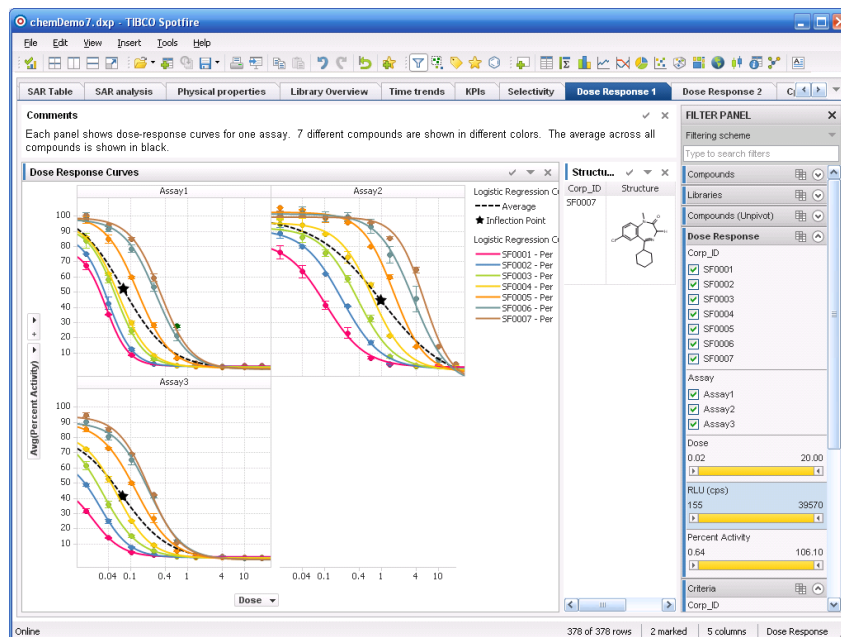
- How do my compounds behave across targets?
- Which compounds are selective, and why?
- Which compounds should advance?



Dose Response

For: Screening Biologists, Team Chemists

- How do my lead compounds behave in different assays?
- How do my lead compounds compare to a reference compound?
- How reliable are my IC50 values?



High Throughput Screening

For: Screening Biologists, Team Chemists, Team Biologists

- How do I detect systematic quality issues?
- How do I identify hits?



Competitive Analysis

For: Researchers, Managers

- Where is my company strong and weak?
- What therapeutic areas, diseases, mechanisms are best to target?

