



# TIBCO Spotfire for Discovery Research

## How Visual Analysis Can Accelerate Insights

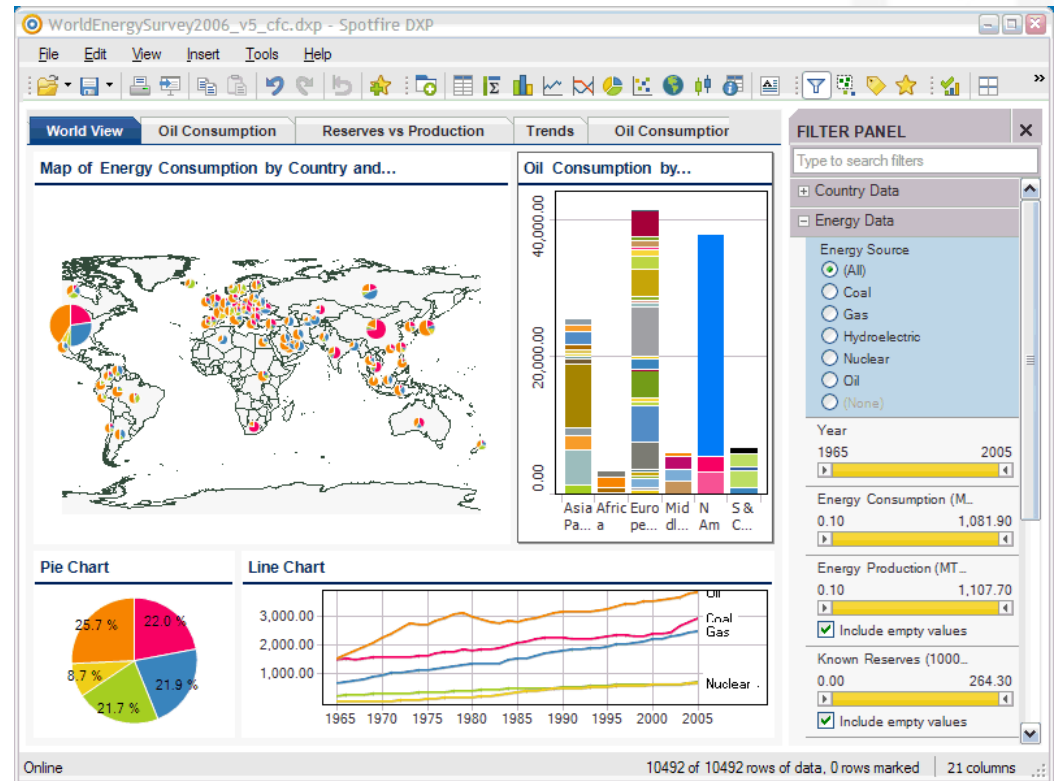
September 2011

<http://spotfire.tibco.com/spotfire-for-you/by-industry/life-sciences/lead-discovery.aspx>



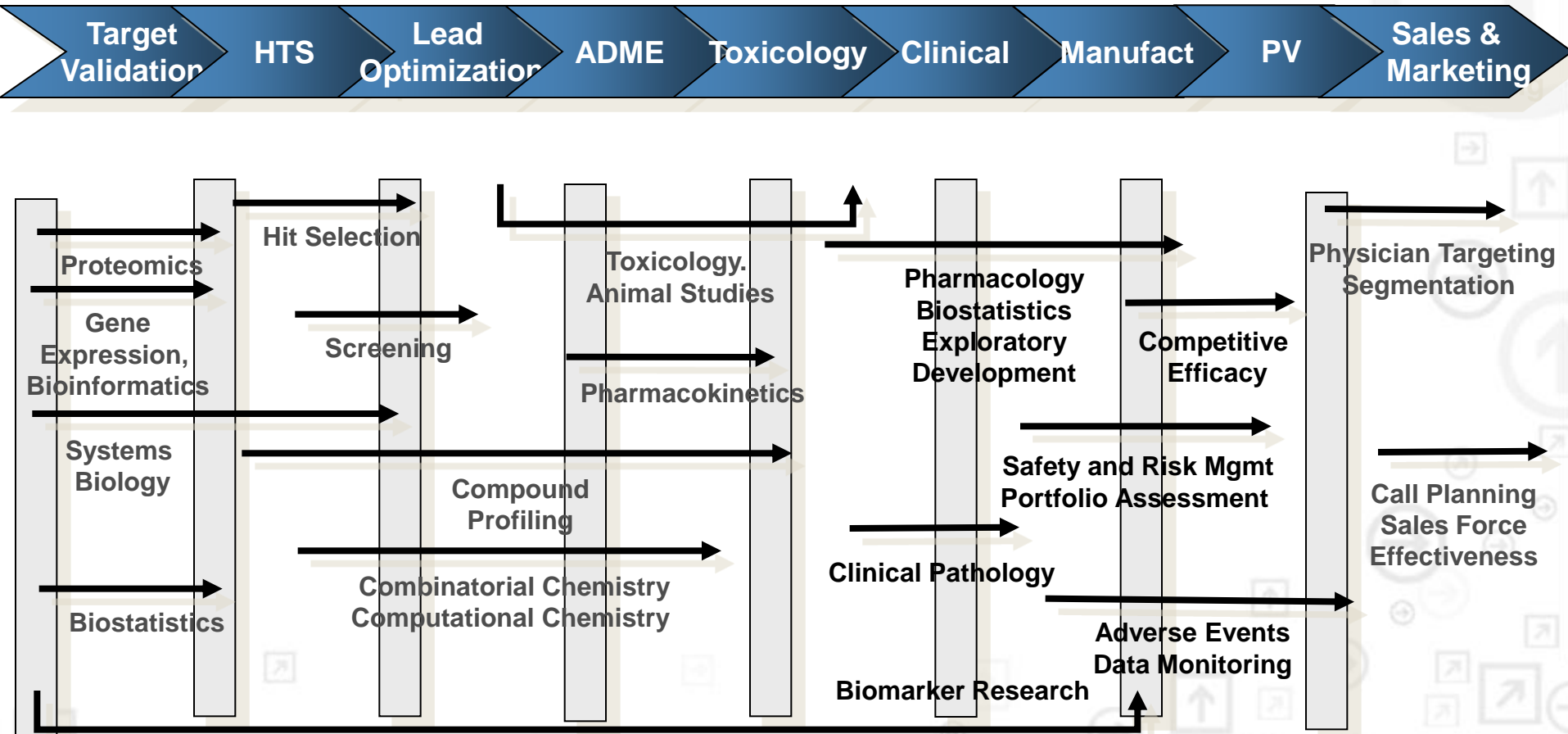
# What is Spotfire?

- Unique interactive visual analytics to spot trends, outliers and other hidden relationships in data
- Applicable to many different types of data
- Easily accesses data from multiple, disparate sources (Oracle, Excel, SAP, etc.)
- Helps deploy best practices
- Extensible platform with an open SDK

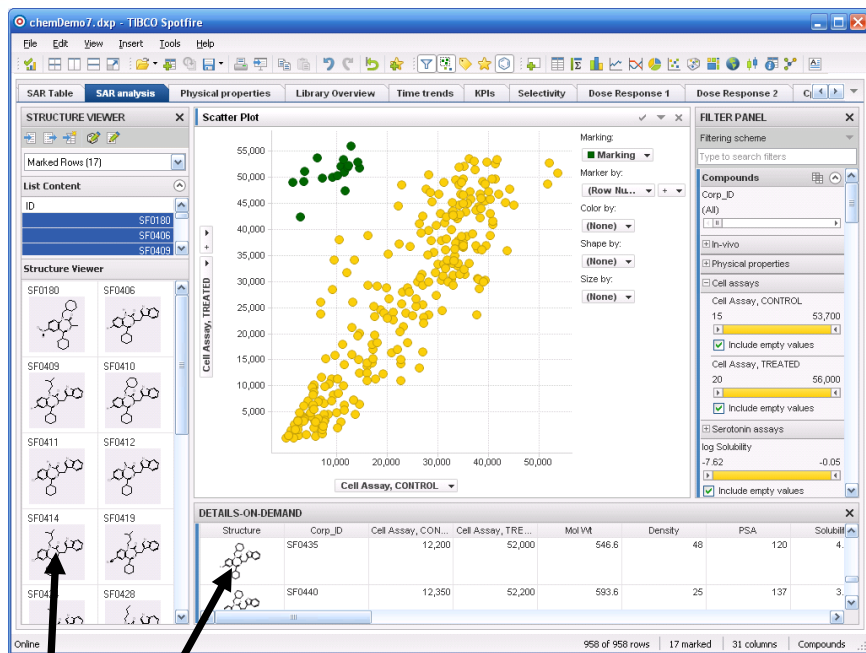


# Spotfire Across the Pharma Enterprise

One user experience for analytics - Unified data retrieval - Configurable to any business process





# Spotfire Integration with ChemAxon



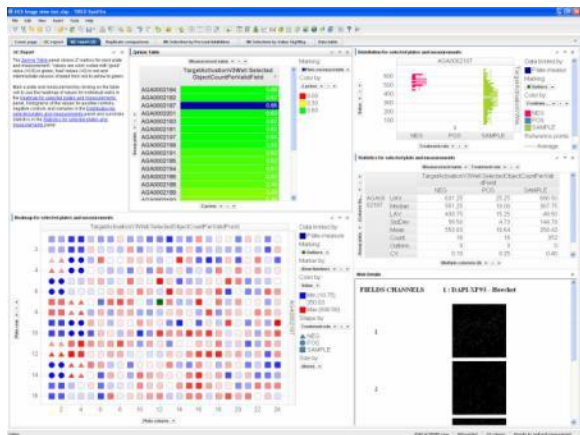
Spotfire Client

 MarvinView

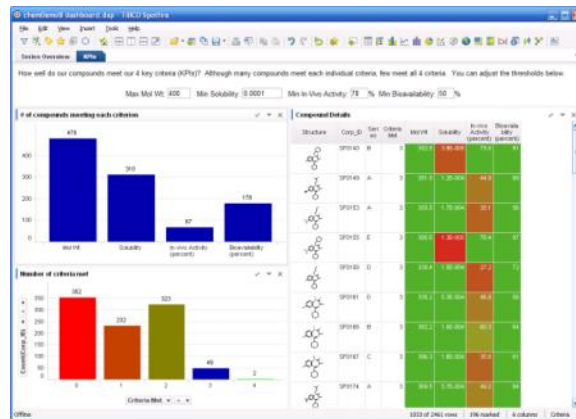
  
Spotfire Server

  
JChem Cartridge

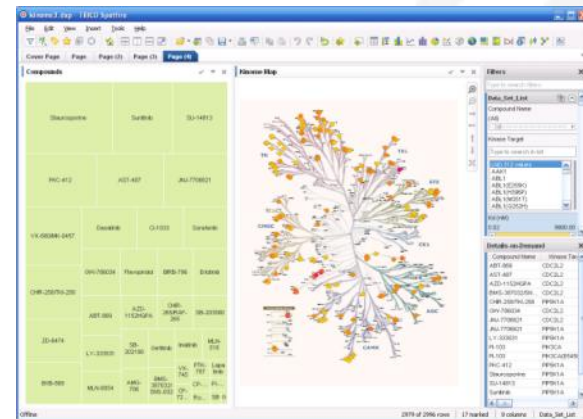
# TIBCO Spotfire: One Platform, Many Applications



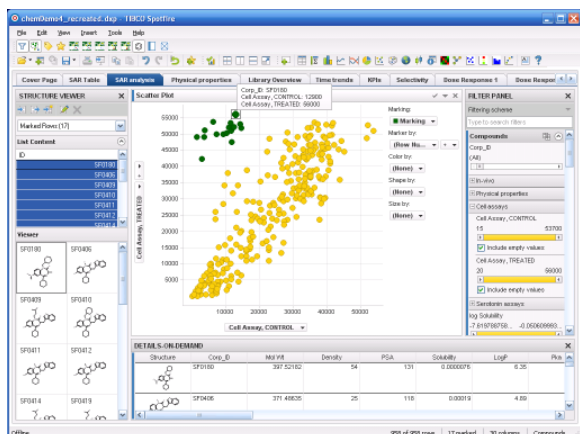
HCS, HTS



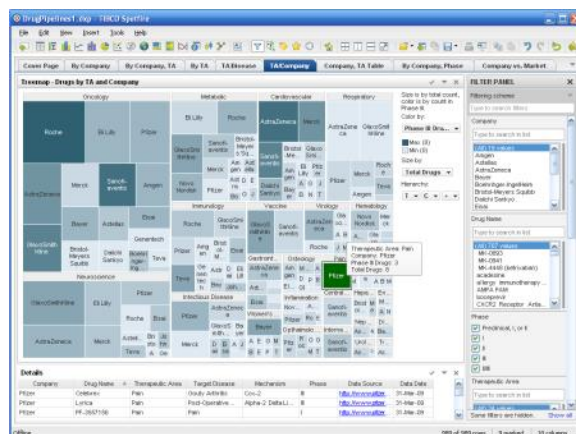
Project KPIs



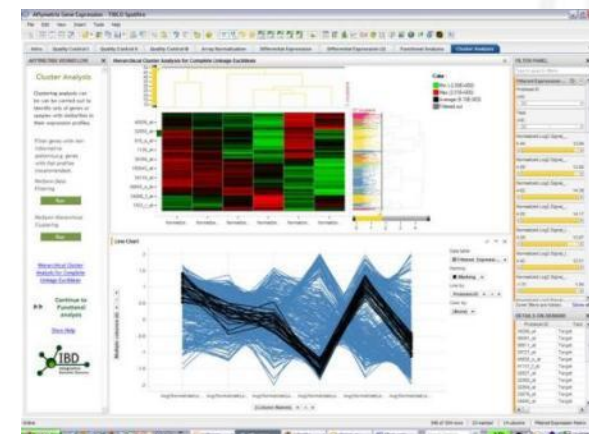
Kinase Inhibitors



SAR



Competitive Intelligence

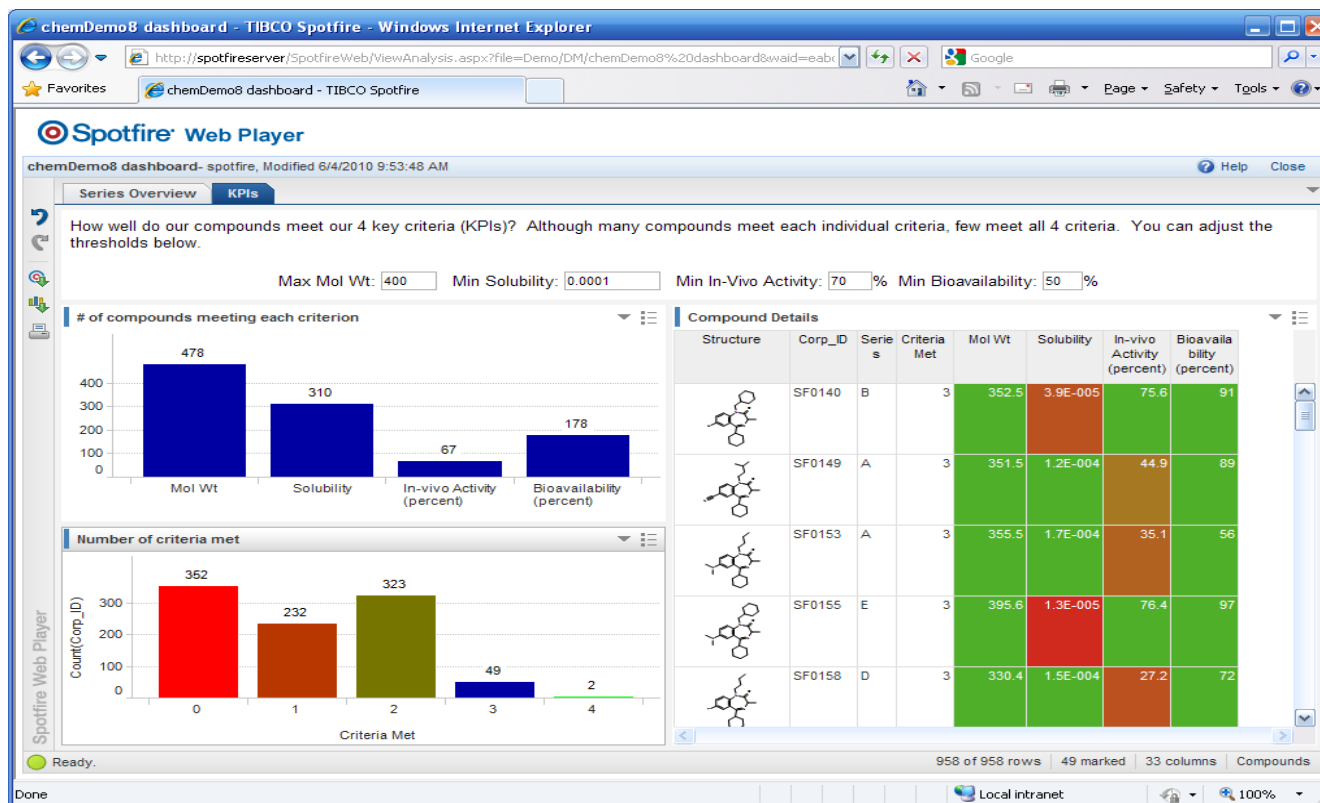


Gene Expression

# Chemistry Project Dashboard

For: Team Leaders, Project Managers, Scientific Management

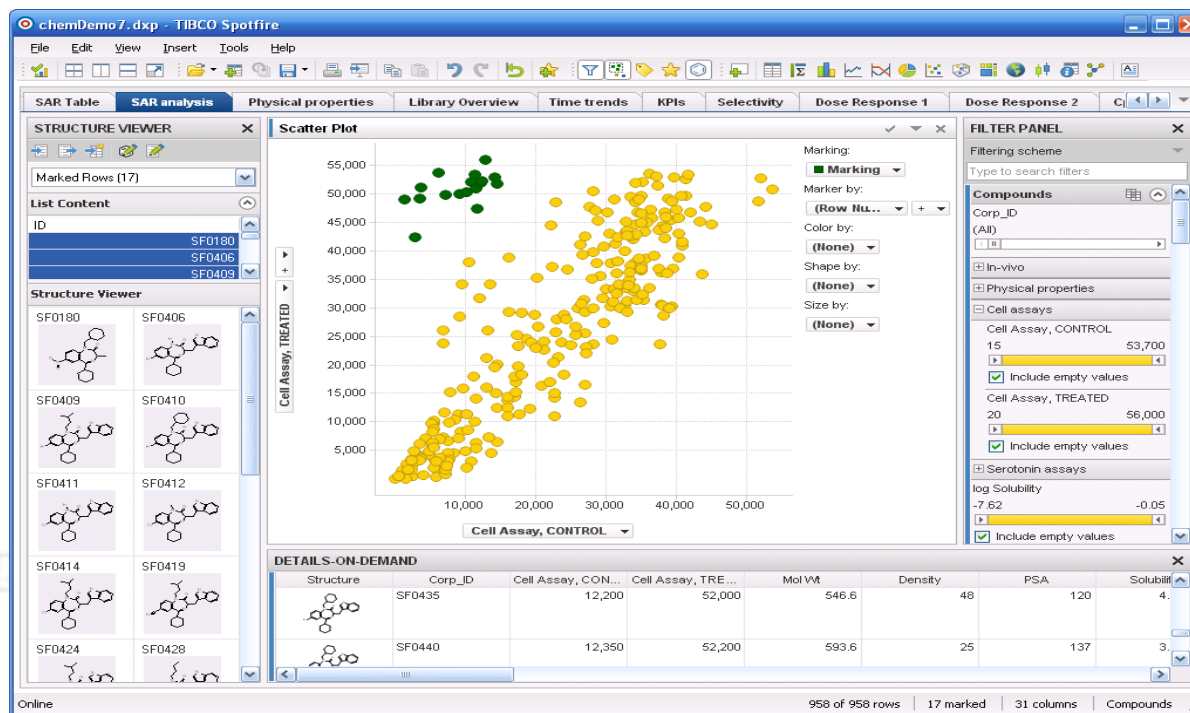
- How is my project doing vs. goals?
- Which series looks most promising?



# SAR

For: Medicinal Chemists, Computational Chemists, Biologists

- Are there trends? Outliers?
- What's the structural basis for observed activity?
- What should I make next?



# Selectivity Analysis

For: Screening Biologists, Lead Chemists

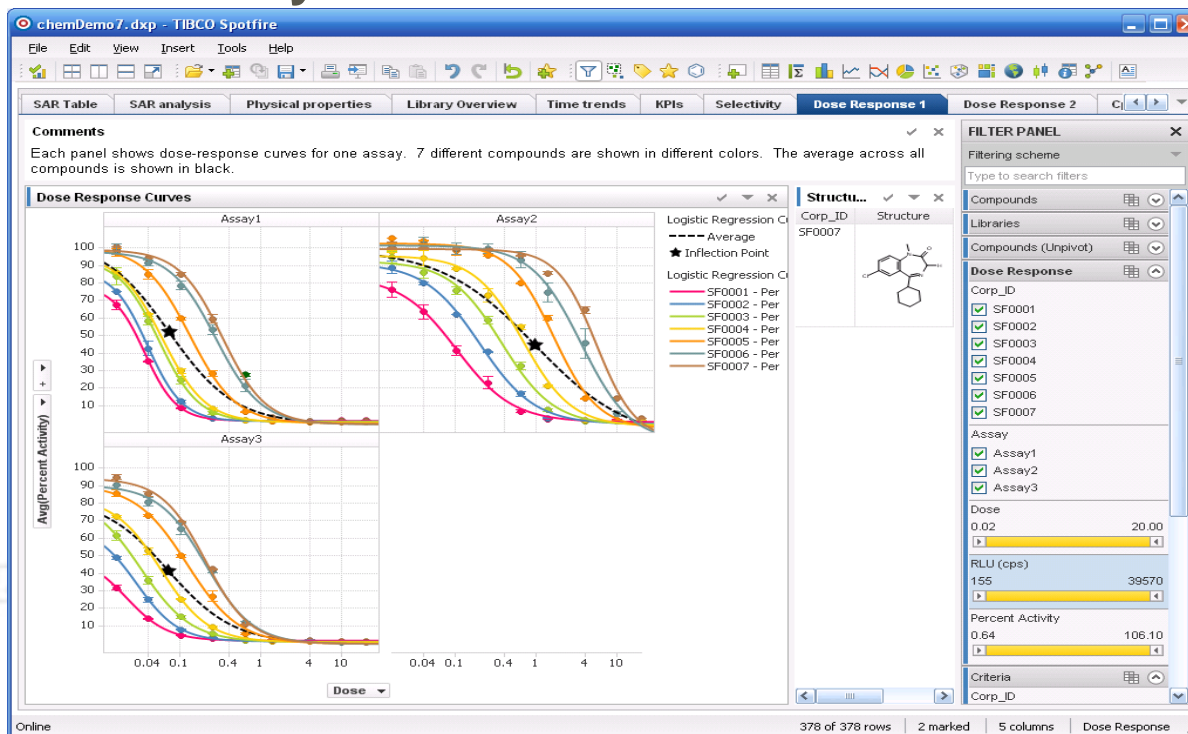
- How do my compounds behave across targets?
- Which compounds are selective, and why?
- Which compounds should advance?



# Dose Response

For: Screening Biologists, Team Chemists

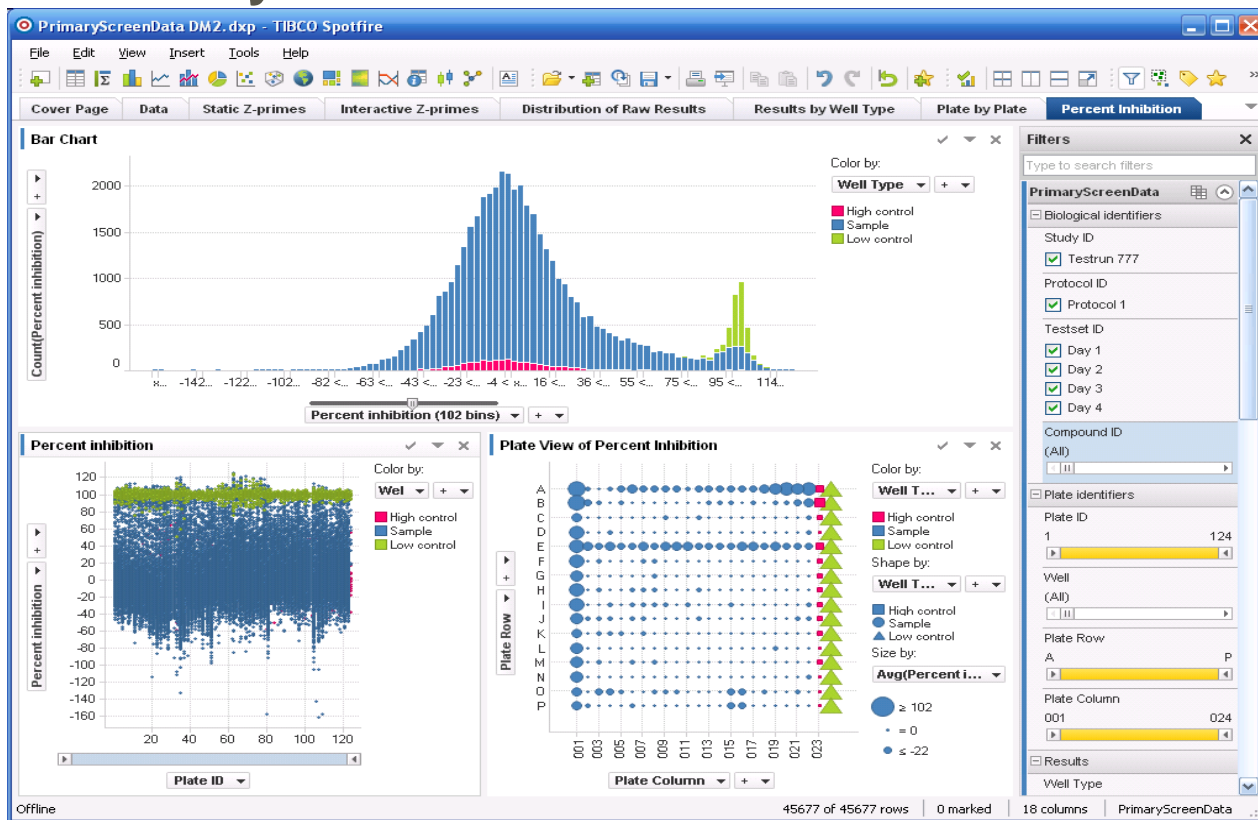
- How do my lead compounds behave in different assays?
- How do my lead compounds compare to a reference compound?
- How reliable are my IC50 values?



# High Throughput Screening

For: Screening Biologists, Team Chemists, Team Biologists

- How do I detect systematic quality issues?
- How do I identify hits?



# Competitive Analysis

For: Researchers, Managers

- Where is my company strong and weak?
- What therapeutic areas, diseases, mechanisms are best to target?

