

DATABASE SEARCH TECHNOLOGIES

Products



JChem Base



JChem Oracle Cartridge



JChem PostgreSQL Cartridge



Web Services

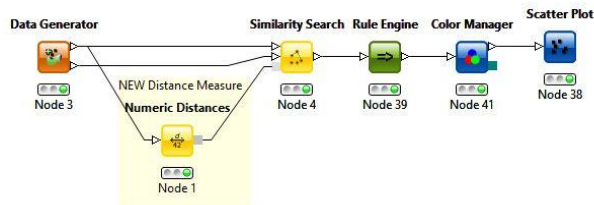
Typical workflows

Interactive search



VS

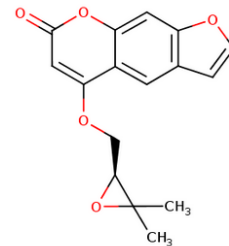
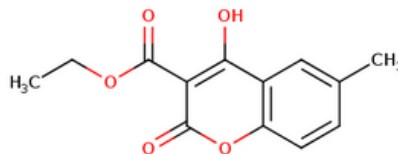
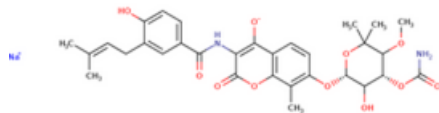
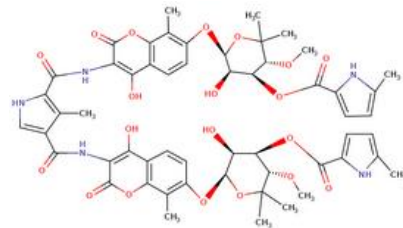
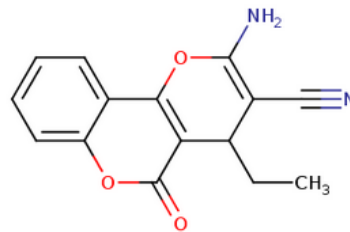
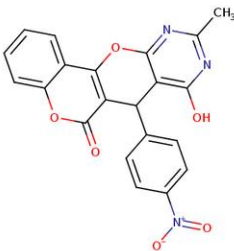
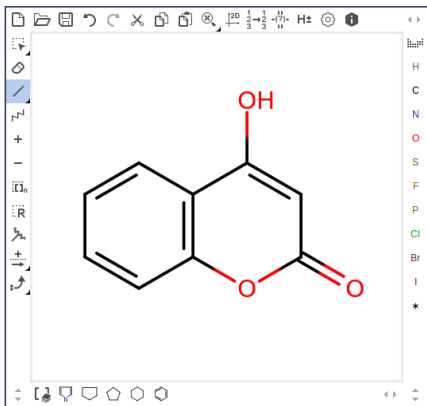
WorkFlow usage



Relevance search

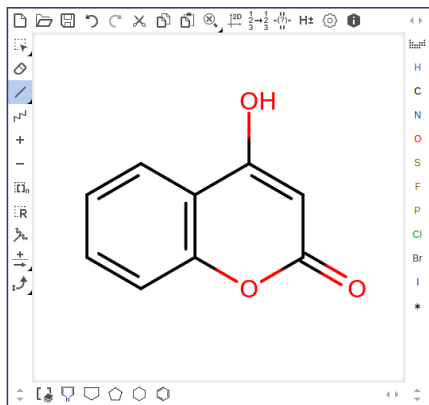
Unordered result

Hits :

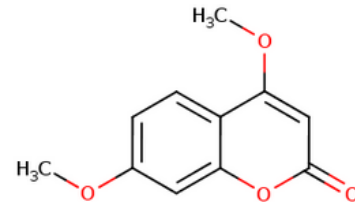
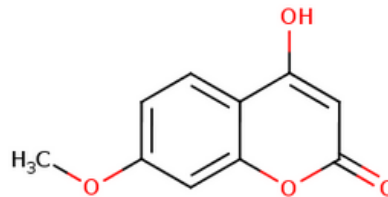
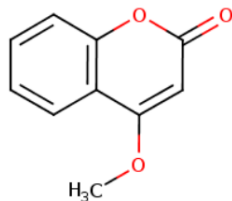
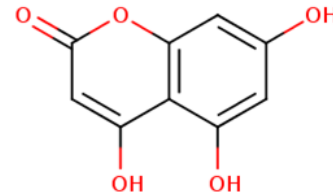
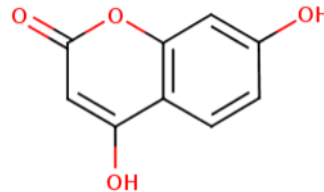
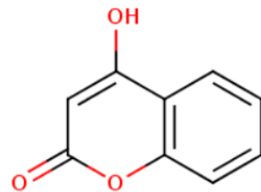


Relevance search

Order substructure search hits according to the relevance to the query structure.



Hits :

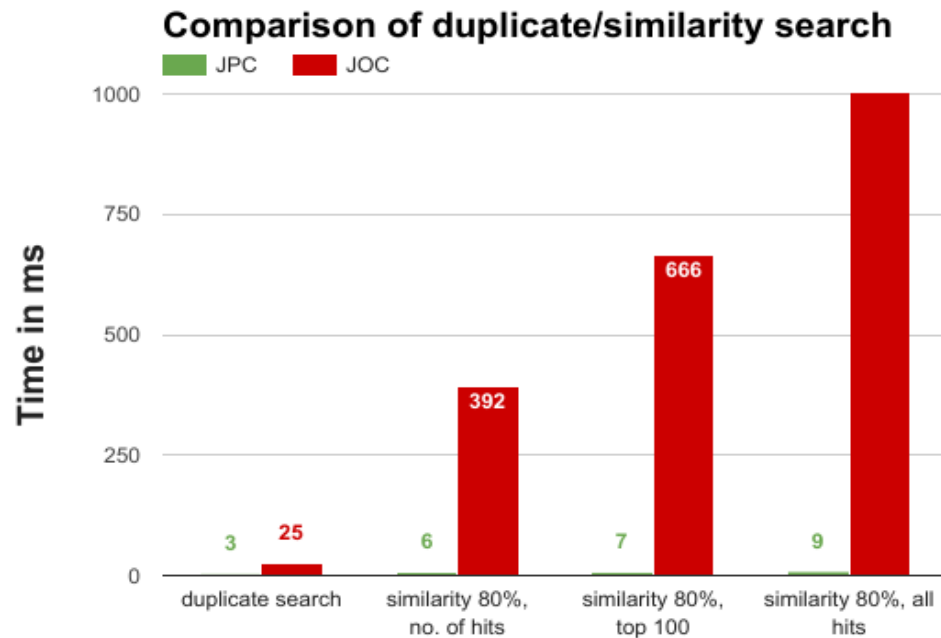


Hits as you draw

The image shows the Marvin JS web interface. The central canvas displays the Marvin JS logo and the text "Marvin JS by ChemAxon". The interface includes a top toolbar with icons for file operations, drawing tools, and a zoom level of 120%. On the right side, there is a "Quick hits" panel listing chemical elements: H, C, N, O, S, F, P, Cl, Br, I, and *. The bottom toolbar contains icons for various drawing and editing functions.

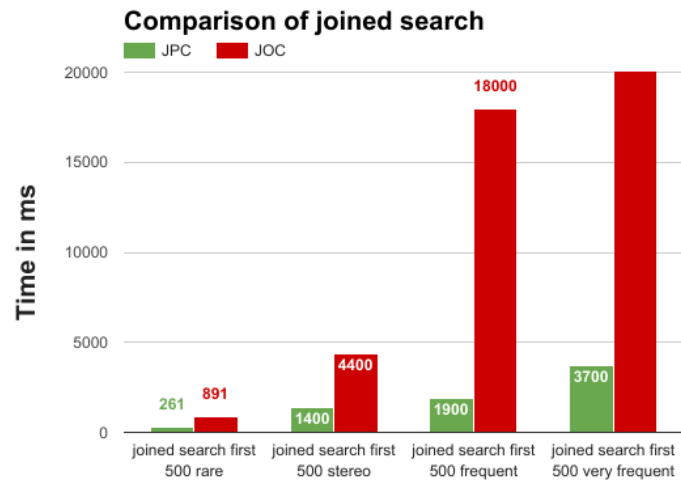
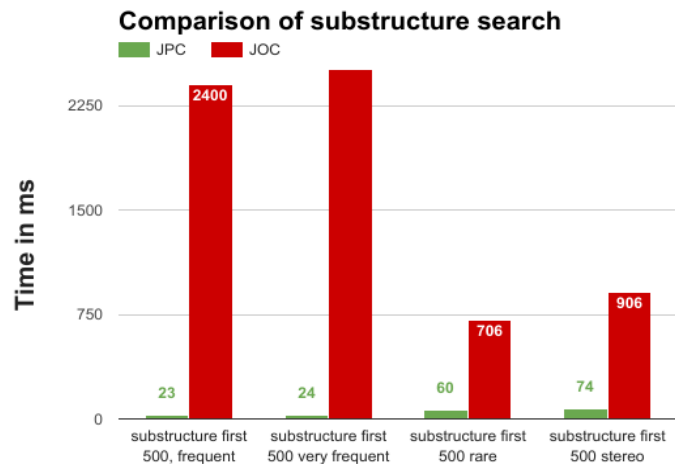
Speed

Duplicate/Similarity search



Speed

Substructure search



So how fast is it?



Do not blink (300 ms)



Human reaction time (100 ms)

But there is one little problem





THANK YOU

András Volford